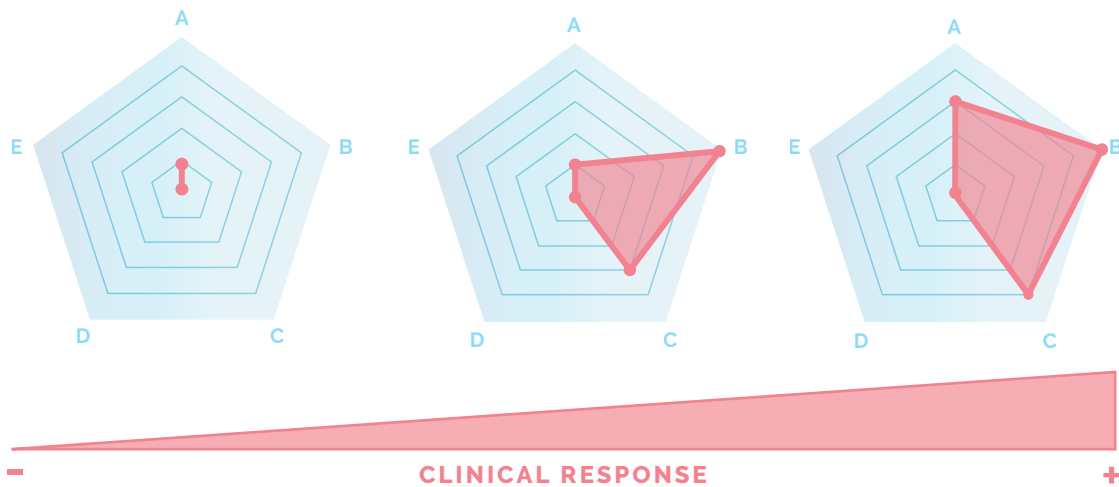


## Choose the best therapy for Colorectal Cancer

### PERSONALIZED IMMUNOGRAM



#### **A** *MSI high (FDA) / About 15% of Colorectal Cancer*

For patients with metastatic CRC that have progressed following prior treatment and who have no satisfactory alternative treatment options.

#### **B** *TMB (Tumor Mutational Burden; ASCO 2017) / 15% of TMB are MSI-*

Overall, TMB has been shown to be a predictive biomarker for immunotherapy. High, intermediate, and low TMB were defined as  $\geq 20$  mut/Mb,  $\geq 6$  and  $< 20$  mut/Mb, or  $< 6$  mut/Mb, respectively. It has been reported that a minimum of 1.1 Mb of coding genome can accurately assess this TMB compared with sequencing of the whole exome.

#### **C** *PD-L1 (%) (FDA)*

Over-expression of PD-L1 is not predictive but associated with better prognosis.




#### **D** *CD8 T cell infiltrate (ASCO 2017)*

Tumor infiltrating T lymphocytes CD8+.

#### **E** *Resistances (ASCO 2017)*

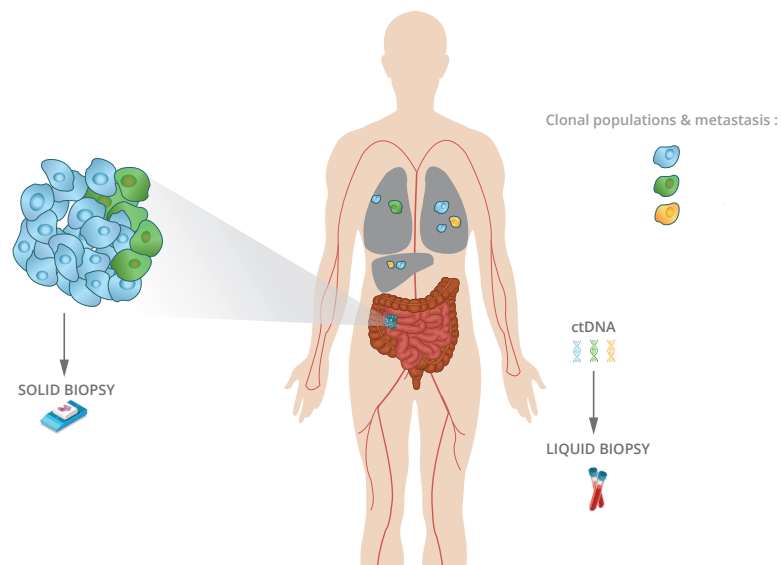
Mutations in JAK1, JAK2, POLE, STK11, PD-L1, higher number of CNVs have been associated with resistance to immunotherapy.

## TARGETED THERAPY

	 FDA APPROVED	 OFF-LABEL (FDA APPROVED FOR OTHER)	 IN DEVELOPMENT (ONGOING CLINICAL TRIALS)
EGFR mutations	✓		✓
KRAS mutations	✓		✓
NRAS mutations	✓		✓
BRAF mutations		✓	✓
cMET amplification		✓	✓
HER2 amplification+ mutations		✓	✓
MAPK mutations		✓	✓
PIK3CA mutations			✓

## BLOOD

Improve the assessment of cancer heterogeneity by combining Solid and Liquid Biopsy



## KEY FACT

On June 23<sup>rd</sup> 2017, the FDA approved the first NGS companion diagnostic that screens for multiple drugs. This test is using the OncoMINE® Dx Target panel and the Ion Torrent technology. Since the beginning we have bet on Ion Torrent technology for our Onco solutions and our **OncoSTRAT&GO®** has been built based on the design of the OncoMINE® comprehensive panel that we improved by adding key regions or genes needed to increase treatment's options for the patients.

For more technical information, check our card on **Colorectal Cancer**